

Key Word Sign in the NDIS



Presenter Name: Cathy Olsson
Title: KWS Consultant

Key Word Sign Australia

(03) 9843 2000

keywordsignaustralia@scopeaust.org.au

www.kwsa.com.au

Key
Word
Sign
Australia

Learning outcomes



Understand:

- why and how KWS related supports are 'reasonable and necessary' in the NDIS
- different Plan options
- roles in NDIS plan development and implementation
- how to improve potential for KWS supports to be included in Plans

Increased awareness of types of KWS supports, and how they link to NDIS goals.



Reasonable and Necessary

- Related to the Participant's disability
- Not include day-to-day living costs that are not related to a Participant's disability support needs
- Represent value for money and,
- Are likely to be effective and beneficial to the participant



Is the support **effective**, beneficial and good practice?

Will the support assist me to **achieve goals** and aspirations?

Will the support assist me to **participate** socially and economically?

Does the support represent **value for money**?

Does the support consider what is **reasonable for families** to provide?

Is the NDIS the most **appropriate** funding body for the support?

Was it **recommended** by an allied health professional?

Is this support **necessary** to assist me to **participate** in social activities and build social connections?

Do I feel as though **the cost** of the support is **reasonable** given my needs?

Is this support **necessary** in addition to the **natural support** that is present in typical **families and communities**?

Is this support **necessary** for me to work towards a **goal** or goals included in my plan?

If you are an adult - is this support **necessary** to assist me to **participate** in the economy, such as work as an employee or contribute to consumerism?

Are there any other **cost-effective alternative** supports that would be suitable instead?

Would this support be more appropriately funded through a different state or federal funding body? E.g. health, transport, education, mental health, employment, aged care?

Is there evidence to suggest that this type of support is considered '**good practice**'?

If it is a current support, have I obtained **beneficial outcomes** from this support in the past?

YES

YES

YES

YES

YES

YES

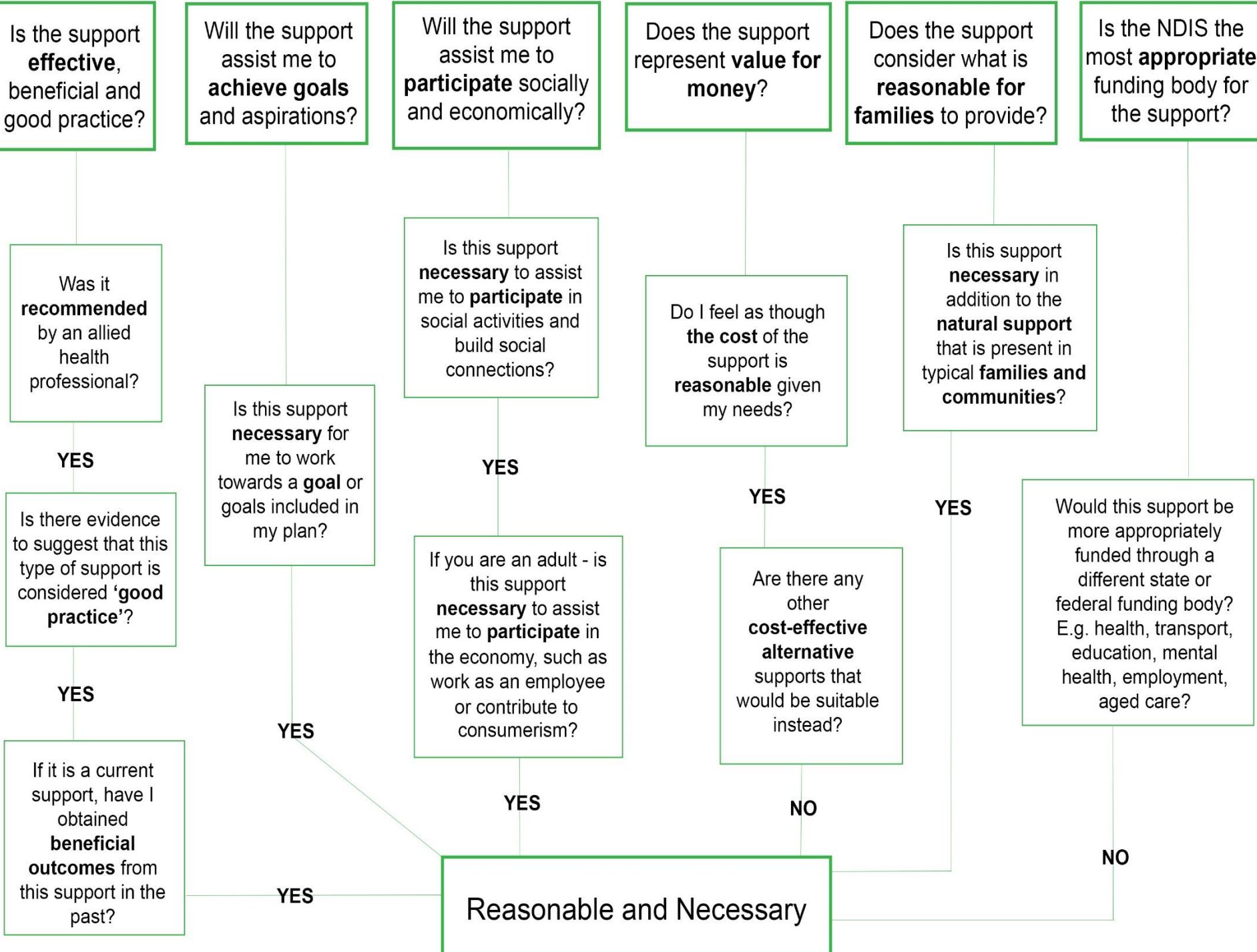
NO

NO

YES

YES

Reasonable and Necessary



Why and How are KWS supports eligible under the NDIS?



Provision of AAC generally, and KWS specifically, is evidence based – for a range of people with communication difficulties

Recommended as part of speech pathology intervention practice – so can be recommended by speech pathologists as part of their supports.

Can contribute to communicative development and participation - link to goals/include goals which link to these outcomes!

Communication underpins social connection – link to goals/include goals which link to these outcomes

The who's who in the NDIS

- Planners
 - Which supports, where in the Plan
 - 'reasonable and necessary'?

- Plan Managers
- Support Coordinators
- Providers



What type of Plan do you have– and why do you need to know?

<https://www.ndis.gov.au/participants/creating-your-plan/ways-manage-your-funding>

Agency managed

- Providers claim for their services through the NDIS Portal
- Only able to access services from NDIS registered Providers

• Plan managed (the Plan will include funding for a Plan Manager)

- Plan Manager pays the invoices sent to them by Providers (Plan management is one of the supports which can be included in Plans).
- Able to access services from registered and unregistered providers (dependent on supports).

• Self managed

- Providers send invoices to participants who then make payment and claim back from the NDIS
- Able to access services from registered and unregistered providers.



Who's who in the NDIS cont.

- Planner
- Plan Manager
- Support Coordinator
- Providers



Who's who in the NDIS cont.

- Planner
- Plan Manager
- Support Coordinator
- Providers



Who's who in the NDIS cont.

- Planner
- Plan Manager
- Support Coordinator
- Providers



Examples of goals related to NDIS supports

1. To support participant's ability to communicate more effectively with their peers (extended family and/or educators; peers at school; members of recreational or sports groups)
2. To support participant's ability to effectively use a greater range of communication functions, including their ability to reject (important for safety), request, ask questions, comment etc



Why do communication partners need to learn Key Word Signing?

‘A communication disability does not just belong to the individual. It belongs to the entire environment of which the individual is the focal point’



Sandwell - Communication Aids Centre, UK



Key Word Sign
Australia

Examples of goal related to NDIS supports

3. To support participant's ability to make friends and maintain friendships
4. To help reduce behaviours of concern
5. To support improved school attachment and participation
6. To support increased independence and participation
7. To strengthen understanding of and development of protective behaviours



Others.....?



Support categories in Plans

- **Core**

enable participants to complete activities of daily living. Participant budgets often have a lot of flexibility to choose specific supports with their core support budgets, but cannot reallocate this funding for other support purposes (i.e. capital or capacity building supports).

- **Capital**

Investments, such as assistive technologies - equipment, home or vehicle modifications, or for Specialist Disability Accommodation (SDA). Participant budgets for this support purpose are restricted to specific items identified in the participant's plan.

- **Capacity Building**

enable a participant to build their independence and skills.



KWS supports (aka funding) you might request

1. for significant communication partners to attend 'central' KWS workshops (currently Basic only, but changes are imminent).

Costings available on state pages, <https://kwsa.com.au/training/>

2. for provision of 'local' KWS workshop – to include a broader range of communication partners e.g. family plus support workers, EC workers, allied health team, educational supports

Information about how to arrange a Local workshop plus costings available on State pages, KWSA Website

<https://kwsa.com.au/training/>



KWS supports you might request

3. Supports for implementation of Key Word Sign in everyday communication environments – to support understanding and expression (Speech Pathologist or other eligible Allied Health provider – KWS trained)
4. Direct supports - for development of speech, language, communication skills, and communicative participation of the participant, incorporating use of KWS (Speech pathologist and/or AHA, trained in KWS)



Supports you might request

5. Consultative supports to primary provider - for development of speech, language, communication skills, and communicative participation of the participant, incorporating use of KWS (Speech pathologist and/or AHA, trained in KWS)
6. Supports for you to continue to develop your own knowledge of and fluency in using KWS (training/group practice etc)
7. Supports to fund attendance at a group which includes KWS use/run by a KWS Presenter (therapy group, EI group etc)



KWS supports you might request

7. Funding for resources to support KWS implementation (KWS membership, Books, subscription to website for resource preparation, posters, lanyards, book script strips etc)



Others?



Where are they in the NDIS support item catalogue?

- Workshops - Community (Capacity Building/Improved daily living - Therapy supports, Other supports)
- Workshops – Private – as above
- Implementation supports
- Speech pathology/other AHA able to provide supports – (Capacity Building/Improved daily living – Therapy supports)
- Resources – (Core/consumables, Capital – low risk, low cost.)



If your Plan is coming up.....

- Consider your goals and what supports you may need – overall and KWS
- Consider supports for environments i.e. workshop access for educators, or supports into school or accommodation services
- Talk to your speech pathology provider about the supports they would recommend
- Explore what resources you may benefit from
- Have a look at the Key Word Sign Australia website for most up to date information about NDIS supports for KWS



If your Plan is under way.....

What you may be able to do will depend on:

- whether you are self, Plan or Agency managed
- When your Plan was developed/approved
- what funds/support items are in the Plan



Current KWS resources – including memberships, books etc., advice,

- Lanyards, posters (App no longer available), books – KWSA Website
- Resource preparation – subscription based
- General Membership of KWSA
- Facebook page
- State based activities e.g. online Practice sessions being run by SA KWS (for those who have completed a Basic)



How to get the low down!

- Your Providers
- Your network
- Key Word Sign Australia Website – information sheets
- Via General Membership
- Your Planner



Contact details

Key Word Sign Australia



Phone (03) 9843 2000



Email keywordsignaustralia@scopeaust.org.au



Website <https://kwsa.com.au/>

